

TO LET

£530 pcm

**23 South End,
Bedale**



Spacious Character Two Bedroom Terraced Residence

To arrange a viewing contact:



M W Darwin & Sons



Chartered Surveyors, Auctioneers, Valuers & Estate Agents

23 South End, Bedale

This is a modernised spacious property conveniently located for local amenities, with gas fired central heating , garden to the rear. The accommodation comprises:

Living Room 4.94 x 4.34m (16'3" x 14'4") with window to front, stone fireplace, stairs to first floor, beamed ceiling, radiator and power points.



Breakfast Kitchen 4.94 x 3.34m (16'3" x 11'0") with modern white fitted units, sink unit, fitted double oven, 4 ring gas hob, plumbing for washing machine and gas fired central heating boiler.



First Floor

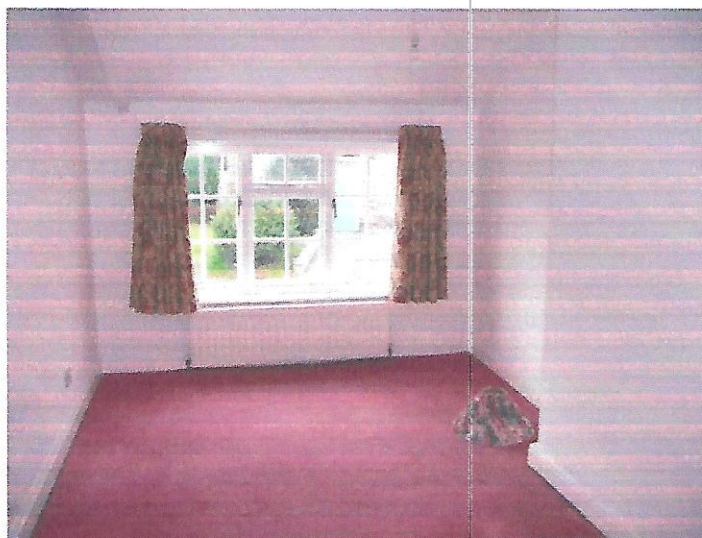
Large Landing

Bedroom 1 4.33 x 2.73m (14'3" x 9'0") Double bedroom, with windows to front, radiator and power points.

Bedroom 2 3.95 x 3.64m (13'0" x 12'0") with radiator, windows to rear, fitted wardrobe and power points

Bathroom Part tiled with white suite comprising panelled bath with shower over, wash basin, electric shaver point

Seperate W.C with hand basin



The property is carpeted with curtains , provides good sized accommodation on a minimum 6 month let.

Terms

Minimum 6 month let, bond and references required, a bond of £800 is required which will be held by the Deposit Protection Service, payable in advance together with the first months rent and administration charge.

The incoming tenant to be responsible for all other service bills.

Services

Mains water, electric, drainage, gas and telephone

Viewing

Strictly by prior appointment with the Agents.

Council Band

Band B as advised by Hambleton District Council.

Please Note:all measurements are approximate, appliances and fittings have not been tested by ourselves, We have NOT carried out any survey of the property, photographs are for guidance only and do not constitute the inclusion of items in the sale, unless stated otherwise. Details are produced for information purposes only and although believed materially correct do not form any part of a contract.



Contact us for a free no obligation market valuation of your property.

RICS homebuyers surveys available contact ourselves for further details.